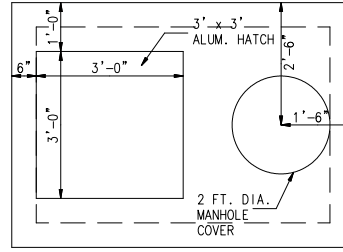
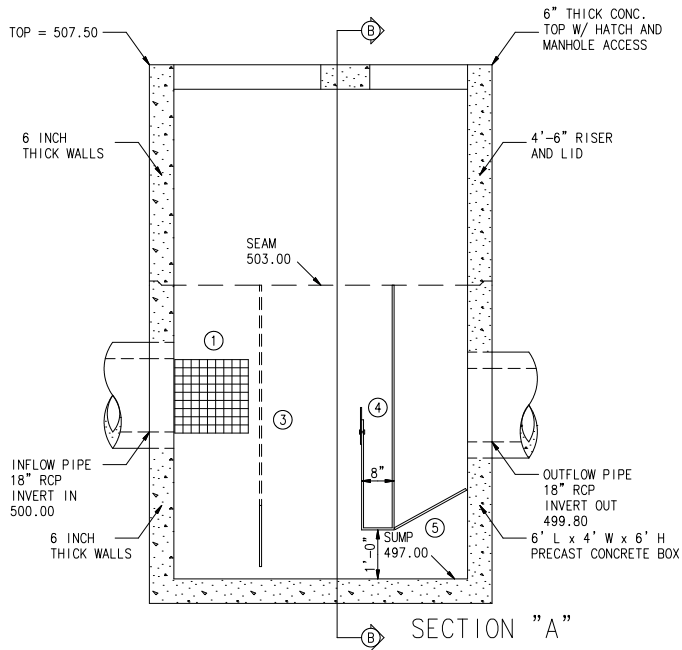


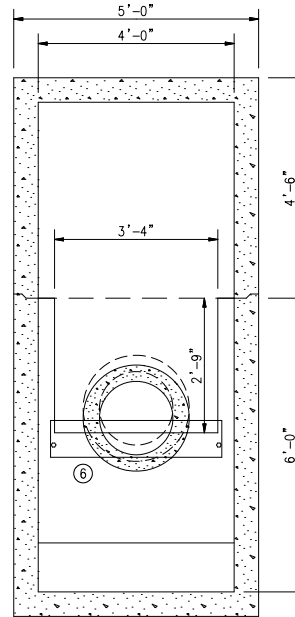
TOP VIEW (INTERNAL)



TOP VIEW (SLAB)



SECTION "A"



SECTION B

LEGEND

- ① EXPANDED ALUMINUM BASKET W/ 1/4" MESH LINING, 1'-6" H x 1'-6" L x 4'-0" W
- ③ 2ND INTERNAL BAFFLE W/ 1" HOLES DRILLED AT 1 1/4" O.C., 6'-0" H.
- ④ SPILL PROTECTIN RESERVOIR 5'-0" H. WITH A 2'-9" FRONT CUT.
- ⑤ 3/4" COCONUT FIBER FILTER IN ALUMINUM FRAME 1'-8" LONG.
- ⑥ 1/4" ALUMINUM PLATE, 9" H., 3'-6" WIDE.

Sample 646 newformat 7/17/2007 p.a.d.s.

Protected by U.S. Patent No's: 6,797,161; 6,936,163; 6,939,461; 6,951,607; 6,994,783; 7,011,743; 7,037,436

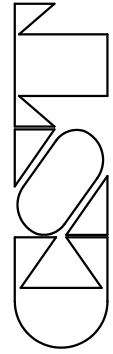
SPECIFICATIONS

- 1. TOTAL FLOW CAPACITY SHALL BE 6.00 CFS.
- 2. WATER QUALITY FLOW OF 1.4 CFS MUST BE TREATED BEFORE BYPASS.
- 3. SPILL PROTECTION CAPACITY SHALL BE 575 GALLONS BEFORE OVERFLOW.
- 4. ANY CHANGES OR SUBSTITUTIONS MUST BE APPROVED BY THE ENGINEER AND THE REVIEWING AUTHORITY.

SAMPLE 646

Device No.: CST-1
CST PROJECT NUMBER

DESIGN FIRM: Engineer's Name



CrystalStream Technologies

THIS DRAWING IS COPYRIGHTED AND IS THE SOLE PROPERTY OF PRACTICAL BEST MANAGEMENT, INC. IT IS PROVIDED FOR THE EXCLUSIVE USE OF THE PROFESSIONAL ENGINEER NAMED HEREON. DESIGN IS BASED ON AND RELIES UPON DATA PROVIDED BY THE ENGINEER NAMED HEREON.