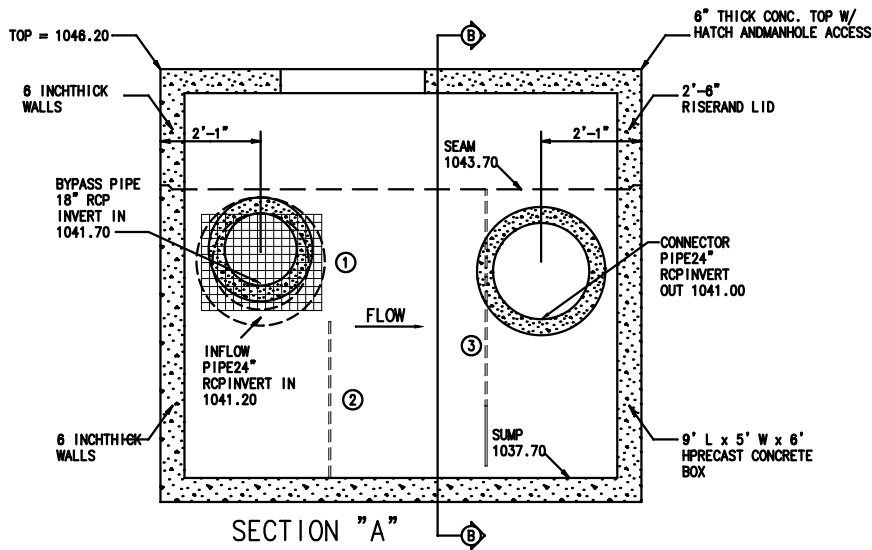
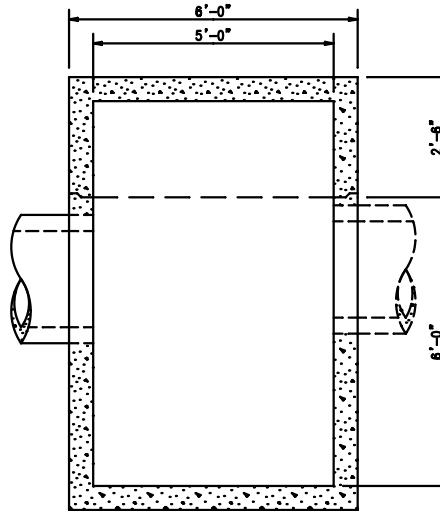


TOP VIEW (SLAB)



SECTION "A"



SECTION B
BYPASS PIPE NOT SHOWN

LEGEND

- ① EXPANDED ALUMINUM BASKET W/ 1/4" MESH LINING, 2'-0" H x 2'-6" L x 5'-0" W
- ② 1ST INTERNAL BAFFLE W/ 1" HOLES DRILLED AT 1-1/4" O.C., 3'-3" H.
- ③ 2ND INTERNAL BAFFLE W/ 1" HOLES DRILLED AT 1 1/4" O.C., 6'-0" H.

Protected by U.S. Patent No's: 6,797,161; 6,936,163; 6,939,461; 6,951,607; 6,994,783; 7,011,743, 7,037,436

SPECIFICATIONS

1. TOTAL FLOW CAPACITY SHALL BE 29.24 CFS.
2. WATER QUALITY FLOW OF 2.89 CFS MUST BE TREATED BEFORE BYPASS.
3. SPILL PROTECTION CAPACITY SHALL BE 875 GALLONS BEFORE OVERFLOW.
4. ANY CHANGES OR SUBSTITUTIONS MUST BE APPROVED BY THE ENGINEER AND THE REVIEWING AUTHORITY.

Sample 1856 newformat 7/19/2007 p.d.d.s.

JOB NAME:

SAMPLE 1856

Device No.: CST-1

CST PROJECT NUMBER

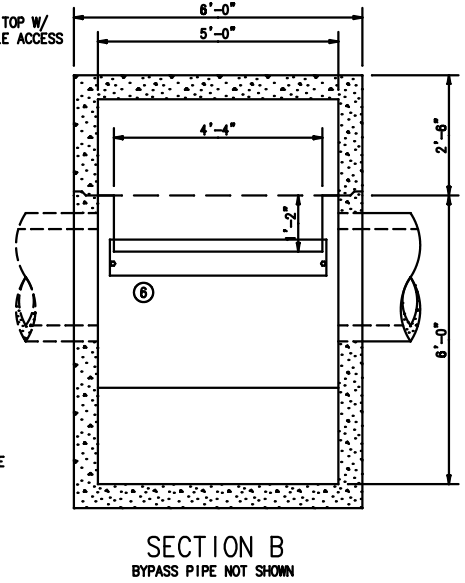
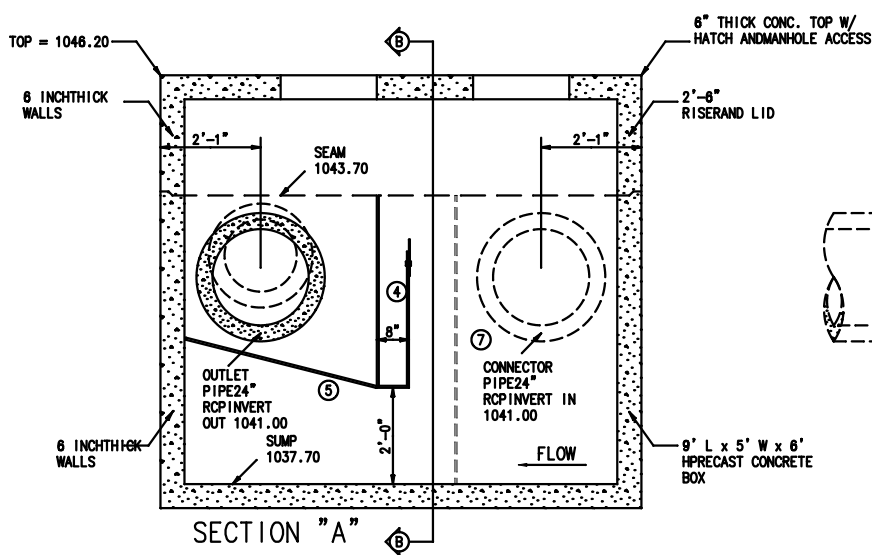
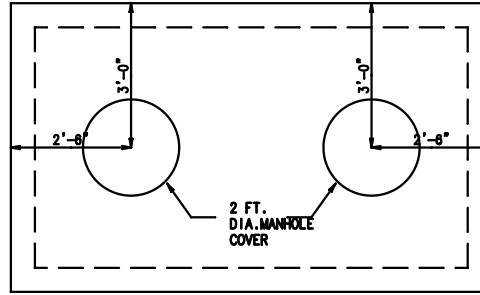
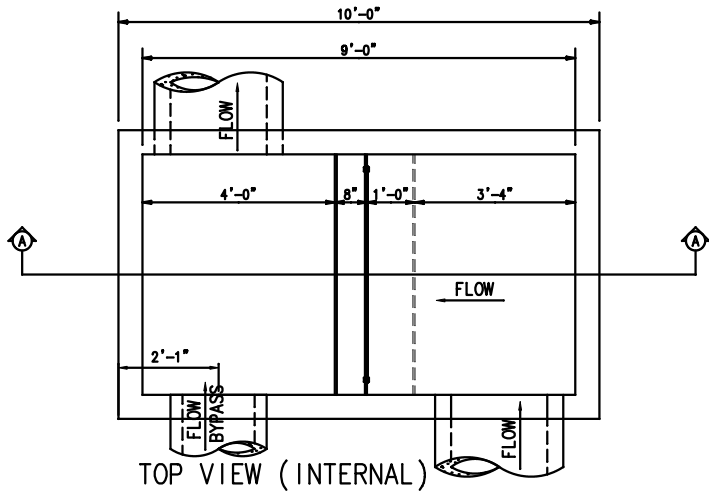
DESIGN FIRM: Engineer's Name



CrystalStream Technologies

THIS DRAWING IS COPYRIGHTED AND IS THE SOLE PROPERTY OF PRACTICAL BEST MANAGEMENT, INC. IT IS PROVIDED FOR THE EXCLUSIVE USE OF THE PROFESSIONAL ENGINEER NAMED HEREON. DESIGN IS BASED ON AND RELIES UPON DATA PROVIDED BY THE ENGINEER NAMED HEREON.

CRYSTALSTREAM WATER QUALITY VAULT
MODEL "1856"



LEGEND

- ④ SPILL PROTECTIN RESERVOIR 4'-0" H. WITH A 1'-2" FRONT CUT.
- ⑤ 3/4" COCONUT FIBER FILTER IN ALUMINUM FRAME 4'-1" LONG.
- ⑥ 1/4" ALUMINUM PLATE, 9" H., 4'-6" WIDE.
- ⑦ 3RD INTERNAL BAFFLE W/ 1" HOLES DRILLED AT 1 1/4" O.C., 6'-0" H.

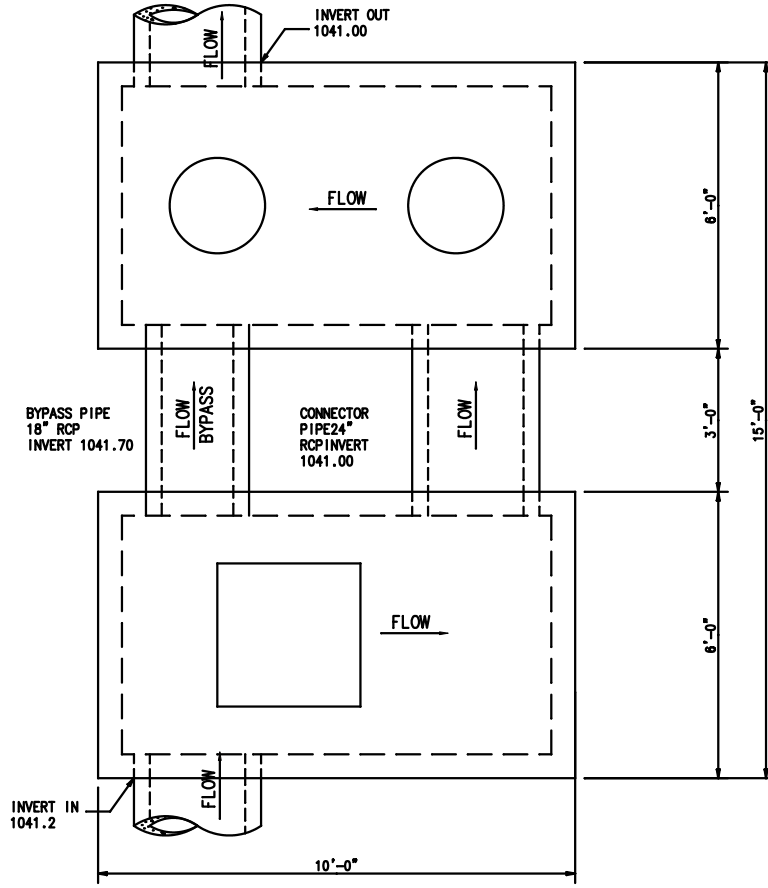
Protected by U.S. Patent No's: 6,797,161; 6,936,163; 6,939,461; 6,951,607; 6,994,783; 7,011,743, 7,037,436
 Sample 1856 newformat 7/19/2007 p.d.d.s.
 JOB NAME:

CrystalStream Technologies

THIS DRAWING IS COPYRIGHTED AND IS THE SOLE PROPERTY OF PRACTICAL BEST MANAGEMENT, INC. IT IS PROVIDED FOR THE EXCLUSIVE USE OF THE PROFESSIONAL ENGINEER NAMED HEREON. DESIGN IS BASED ON AND RELIES UPON DATA PROVIDED BY THE ENGINEER NAMED HEREON.

- SPECIFICATIONS
- 1. TOTAL FLOW CAPACITY SHALL BE 29.24 CFS.
 - 2. WATER QUALITY FLOW OF 2.89 CFS MUST BE TREATED BEFORE BYPASS.
 - 3. SPILL PROTECTION CAPACITY SHALL BE 875 GALLONS BEFORE OVERFLOW.
 - 4. ANY CHANGES OR SUBSTITUTIONS MUST BE APPROVED BY THE ENGINEER AND THE REVIEWING AUTHORITY.

SAMPLE 1856
 Device No.: CST-1
 CST PROJECT NUMBER
 DESIGN FIRM: Engineer's Name



CRYSTALSTREAM WATER QUALITY VAULT
MODEL "1856"

(SHEET 3 of 3)

Sample 1856 newformat 7/19/2007 p.o.d.s.

JOB NAME:

SAMPLE 1856

Device No.: CST-1
CST PROJECT NUMBER

DESIGN FIRM: Engineer's Name

Protected by U.S. Patent No's: 6,797,161; 6,936,163; 6,939,461; 6,951,607; 6,994,783; 7,011,743, 7,037,436

SPECIFICATIONS

1. TOTAL FLOW CAPACITY SHALL BE 29.24 CFS.
2. WATER QUALITY FLOW OF 2.89 CFS MUST BE TREATED BEFORE BYPASS.
3. SPILL PROTECTION CAPACITY SHALL BE 875 GALLONS BEFORE OVERFLOW.
4. ANY CHANGES OR SUBSTITUTIONS MUST BE APPROVED BY THE ENGINEER AND THE REVIEWING AUTHORITY.



CrystalStream Technologies

THIS DRAWING IS COPYRIGHTED AND IS THE SOLE PROPERTY OF PRACTICAL BEST MANAGEMENT, INC. IT IS PROVIDED FOR THE EXCLUSIVE USE OF THE PROFESSIONAL ENGINEER NAMED HEREON. DESIGN IS BASED ON AND RELIES UPON DATA PROVIDED BY THE ENGINEER NAMED HEREON.