

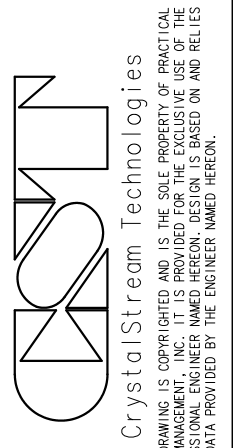
LEGEND

- ① EXPANDED ALUMINUM BASKET W/ 1/4" MESH LINING, 2'-0" H x 2'-0" L x 6'-0" W
- ② 1ST INTERNAL BAFFLE W/ 1" HOLES DRILLED AT 1-1/4" O.C., 3'-3" H.
- ③ 2ND INTERNAL BAFFLE W/ 1" HOLES DRILLED AT 1 1/4" O.C., 6'-0" H.
- ④ SPILL PROTECTIN RESERVOIR 4'-6" H. WITH A 1'-4" FRONT CUT.
- ⑤ 3/4" COCONUT FIBER FILTER IN ALUMINUM FRAME 4'-1" LONG.
- ⑥ 1/4" ALUMINUM PLATE, 9" H., 5'-6" WIDE.

Sample 1266 newformat 7/19/2007 p.o.d.s.s. Protected by U.S. Patent No's: 6,797,161; 6,936,163; 6,939,461; 6,951,607; 6,994,783; 7,011,743; 7,037,436

SPECIFICATIONS

1. TOTAL FLOW CAPACITY SHALL BE 24.00 CFS.
2. WATER QUALITY FLOW OF 3.02 CFS MUST BE TREATED BEFORE BYPASS.
3. SPILL PROTECTION CAPACITY SHALL BE 1725 GALLONS BEFORE OVERFLOW.
4. ANY CHANGES OR SUBSTITUTIONS MUST BE APPROVED BY THE ENGINEER AND THE REVIEWING AUTHORITY.



THIS DRAWING IS COPYRIGHTED AND IS THE SOLE PROPERTY OF PRACTICAL BEST MANAGEMENT, INC. IT IS PROVIDED FOR THE EXCLUSIVE USE OF THE PROFESSIONAL ENGINEER NAMED HEREON. DESIGN IS BASED ON AND RELIES UPON DATA PROVIDED BY THE ENGINEER NAMED HEREON.

SAMPLE 1266

Device No.: CST-1
CST PROJECT NUMBER

DESIGN FIRM: Engineer's Name

CRYSTALSTREAM WATER QUALITY VAULT
MODEL "1266"