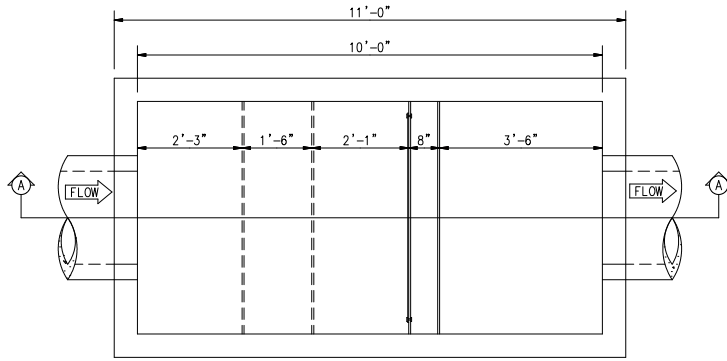
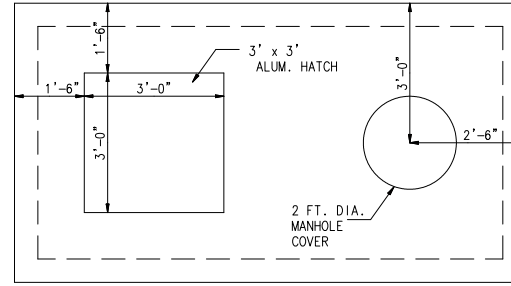


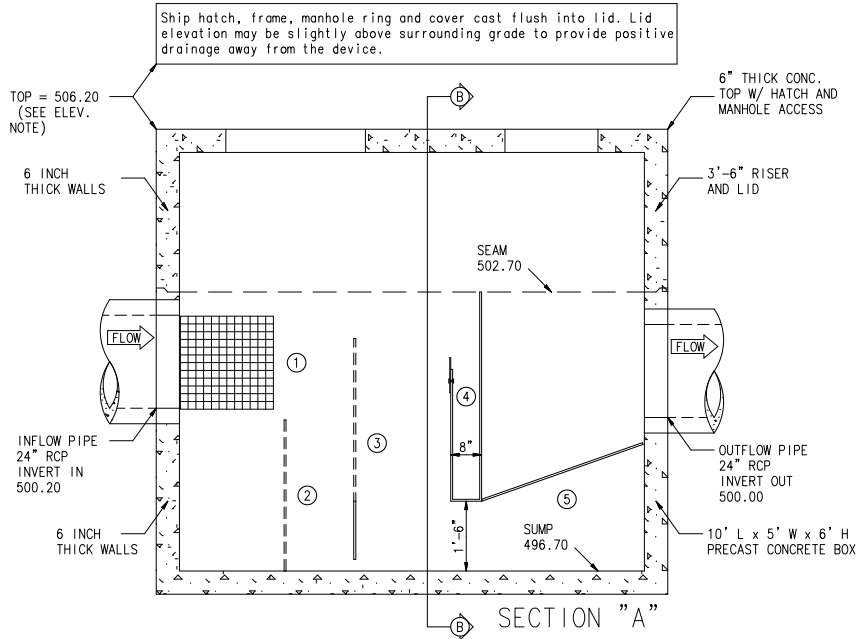
1. ALL PIPES SHALL BE CONSTRUCTED TO BE FLUSH WITH THE INSIDE WALLS.
2. CONTRACTOR IS RESPONSIBLE FOR PROVIDING ALL PIPING, INCLUDING PIPES BETWEEN VAULTS.



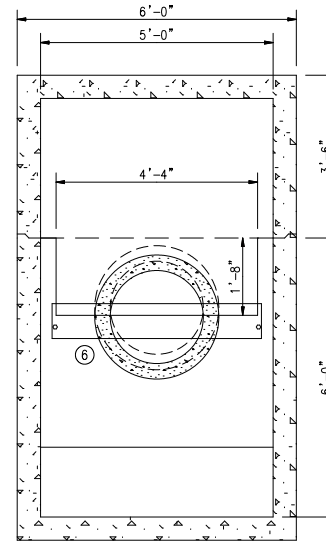
TOP VIEW (INTERNAL)



TOP VIEW (SLAB)



CRYSTALSTREAM WATER QUALITY VAULT
MODEL "1056"



SECTION B

LEGEND

- ① EXPANDED ALUMINUM BASKET W/ 1/4" MESH LINING, 2'-0" H x 2'-0" L x 5'-0" W
- ② 1ST INTERNAL BAFFLE W/ 1" HOLES DRILLED AT 1-1/4" O.C., 3'-3" H.
- ③ 2ND INTERNAL BAFFLE W/ 1" HOLES DRILLED AT 1 1/4" O.C., 5'-0" H.
- ④ SPILL PROTECTION RESERVOIR 4'-6" H. WITH A 1'-8" FRONT CUT.
- ⑤ 3/4" COCONUT FIBER FILTER IN ALUMINUM FRAME 3'-8" LONG.
- ⑥ 1/4" ALUMINUM PLATE, 9" H., 4'-6" WIDE.

Protected by U.S. Patent No's: 6,797,161; 6,936,163; 6,939,461; 6,951,607; 6,994,783; 7,011,743; 7,037,436

SPECIFICATIONS

1. TOTAL FLOW CAPACITY SHALL BE 17.5 CFS.
2. WATER QUALITY FLOW OF 3.04 CFS MUST BE TREATED BEFORE BYPASS.
3. SPILL PROTECTION CAPACITY SHALL BE 701 GALLONS BEFORE OVERFLOW.
4. ANY CHANGES OR SUBSTITUTIONS MUST BE APPROVED BY THE ENGINEER AND THE REVIEWING AUTHORITY.



CrystalStream Technologies

THIS DRAWING IS COPYRIGHTED AND IS THE SOLE PROPERTY OF PRACTICAL BEST MANAGEMENT, INC. IT IS PROVIDED FOR THE EXCLUSIVE USE OF THE PROFESSIONAL ENGINEER NAMED HEREON. DESIGN IS BASED ON AND RELIES UPON DATA PROVIDED BY THE ENGINEER NAMED HEREON.

JOB NAME: cst-sample1056 5/9/2008 p.a.d.s.

Sample 1056

Device No.: CST-1
GAO-000-000000

DESIGN FIRM: CrystalStream Technologies