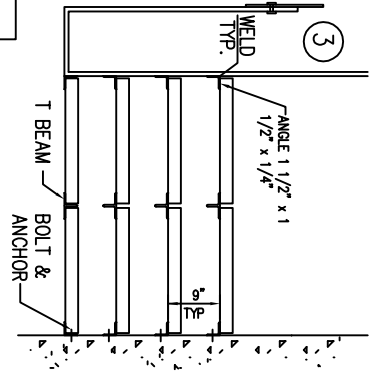
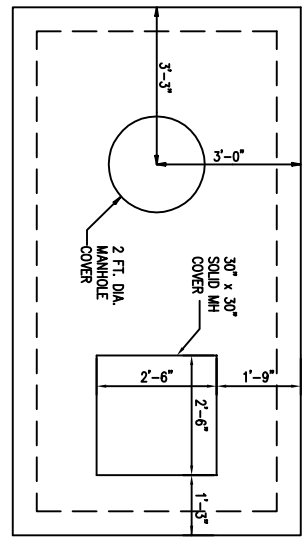
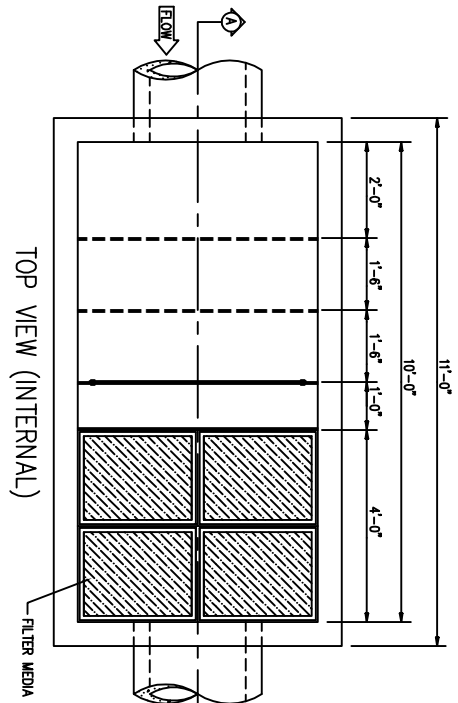


1. ALL PIPES SHALL BE CONSTRUCTED TO BE FLUSH WITH THE INSIDE WALLS.  
 2. CONTRACTOR IS RESPONSIBLE FOR PROVIDING ALL PIPING, INCLUDING PIPES BETWEEN VAULTS.  
 3. ALL VAULT LIFTING CONNECTIONS SHALL BE LOCATED ON THE OUTSIDE OF THE VAULT WALLS.

SQUARE MANHOLE COVER SHALL BE EAW 8313 SOLID TOP WITH 30" X 30" CLEAR OPENING

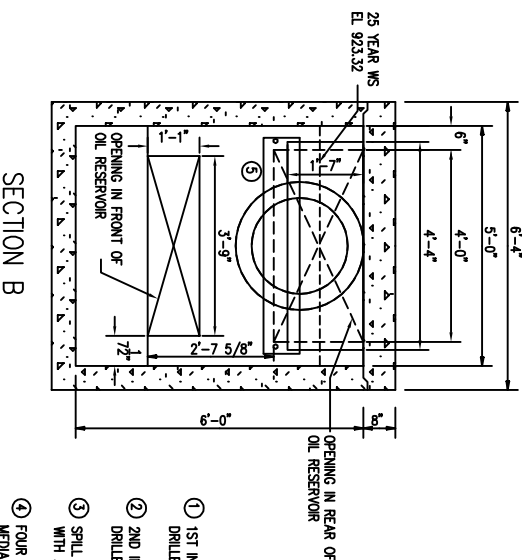
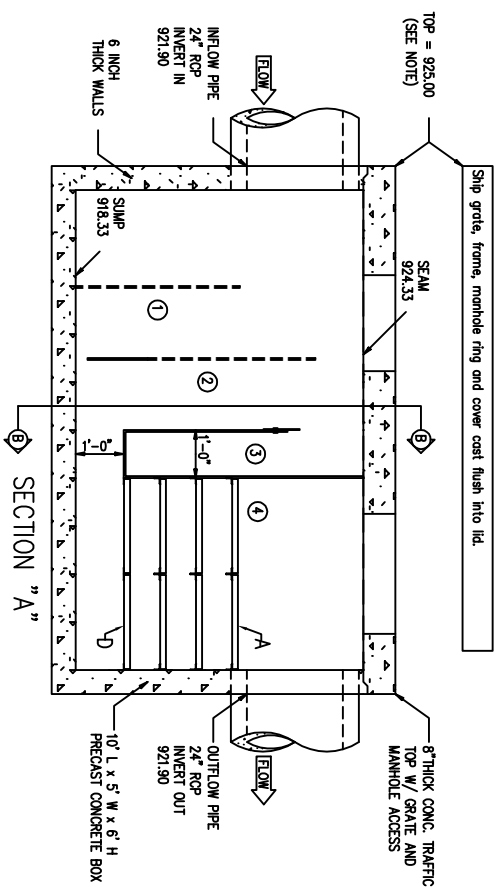


PANEL LEGEND

- Ⓐ FILTER ELEV. 521.58 MEDIA = ORGANICALLY MODIFIED ZEOLITE
- Ⓑ FILTER ELEV. 520.83 MEDIA = PERLITE
- Ⓒ FILTER ELEV. 520.08 MEDIA = X-TEX & COCONUT FIBER
- Ⓓ FILTER ELEV. 519.33 MEDIA = X-TEX & COCONUT FIBER

LEGEND

- ① 1ST INTERNAL BAFFLE W/ 1" HOLES DRILLED AT 1'-1/4" O.C., 3'-5" H.
- ② 2ND INTERNAL BAFFLE W/ 1" HOLES DRILLED AT 1'-1/4" O.C., 5'-0" H.
- ③ SPILL PROTECTION RESERVOIR 5'-0" H. WITH A 1'-7" FRONT CUT.
- ④ FOUR SETS OF FOUR FRAMES FOR FILTER MEDIA, EACH FRAME MEASURES 23" BY 29" AND IS MADE OF WELDED 1 1/4" X 1 1/4" X 1/8" ALUMINUM ANGLES WITH AN EXPANDED ALUMINUM METAL BACKER TO SUPPORT THE FILTER MEDIA ON BOTH SIDES.
- ⑤ 1/4" ALUMINUM PLATE, 9" H., 4'-6" WIDE.



CRYSTALSTREAM "CRYSTALCLEAN" WATER QUALITY VAULT MODEL "1056 HP"

hkeng-willhondaN 5/19/2011 p.a.d.s.

Protected by U.S. Patent No's: 6,797,161; 6,936,163; 6,939,461; 6,951,607; 6,994,783; 7,011,743, 7,037,436

JOB NAME:  
 Williams Honda - North  
 Device No.: CST-N  
 NYO-019-051911  
 DESIGN FIRM: Hawk Engineering

SPECIFICATIONS  
 1. TOTAL FLOW CAPACITY SHALL BE 15 CFS.  
 2. WATER QUALITY FLOW OF 1.76 CFS MUST BE TREATED WITH A HYDRAULIC LOADING RATE OF 14 GPM/SF OR LESS.  
 3. SPILL PROTECTION CAPACITY SHALL BE 770 GALLONS BEFORE OVERFLOW.  
 4. ANY CHANGES OR SUBSTITUTIONS MUST BE APPROVED BY THE ENGINEER AND THE REVIEWING AUTHORITY.

CrystalStream Technologies

THIS DRAWING IS COPYRIGHTED AND IS THE SOLE PROPERTY OF PRACTICAL BEST MANAGEMENT, INC. IT IS PROVIDED FOR THE EXCLUSIVE USE OF THE PROFESSIONAL ENGINEER NAMED HEREON. DESIGN IS BASED ON AND RELIES UPON DATA PROVIDED BY THE ENGINEER NAMED HEREON.